

A decorative graphic on the left side of the page, consisting of a vertical black line intersected by a horizontal black line. To the left of the vertical line are three overlapping squares: a blue one at the top, a red one in the middle, and a yellow one at the bottom. The squares have a soft, blurred gradient effect.

Helping ICT professionals to assess ethical issues in new and emerging technologies

Framework devised by:

Ian Harris, Richard Jennings, David Pullinger and
Simon Rogerson

on behalf of the British Computer Society Ethics
Forum

Presented by:

Penny Duquenoy, Manager, BCS Ethics Forum.

at Minami workshop on Ambient Intelligence and Ethics
University of Pavia, Mantua, Italy 23.9.2008.

© British Computer
Society, September 2008



BCS Ethics Forum – the task ..

- Raising awareness of IT professionals
- To give guidance on ethical issues in technology
- To consider the ethical issues in emerging and future technologies



Ethical 'futures'

- Ambient intelligence, nanotechnologies, 'smart dust'
- BCS role in ethical planning/reflection
- Practical approaches for the professional



Ethical Framework

- DIODE ...

Providing guidance and leadership

- Define
- Issues
- Options
- Decision
- Explanation

Note: the diagrams and examples that follow are at the draft stage of the framework under development.

Diagram One

Ethical Thinking in a Professional Society Context and Scope of DIODE

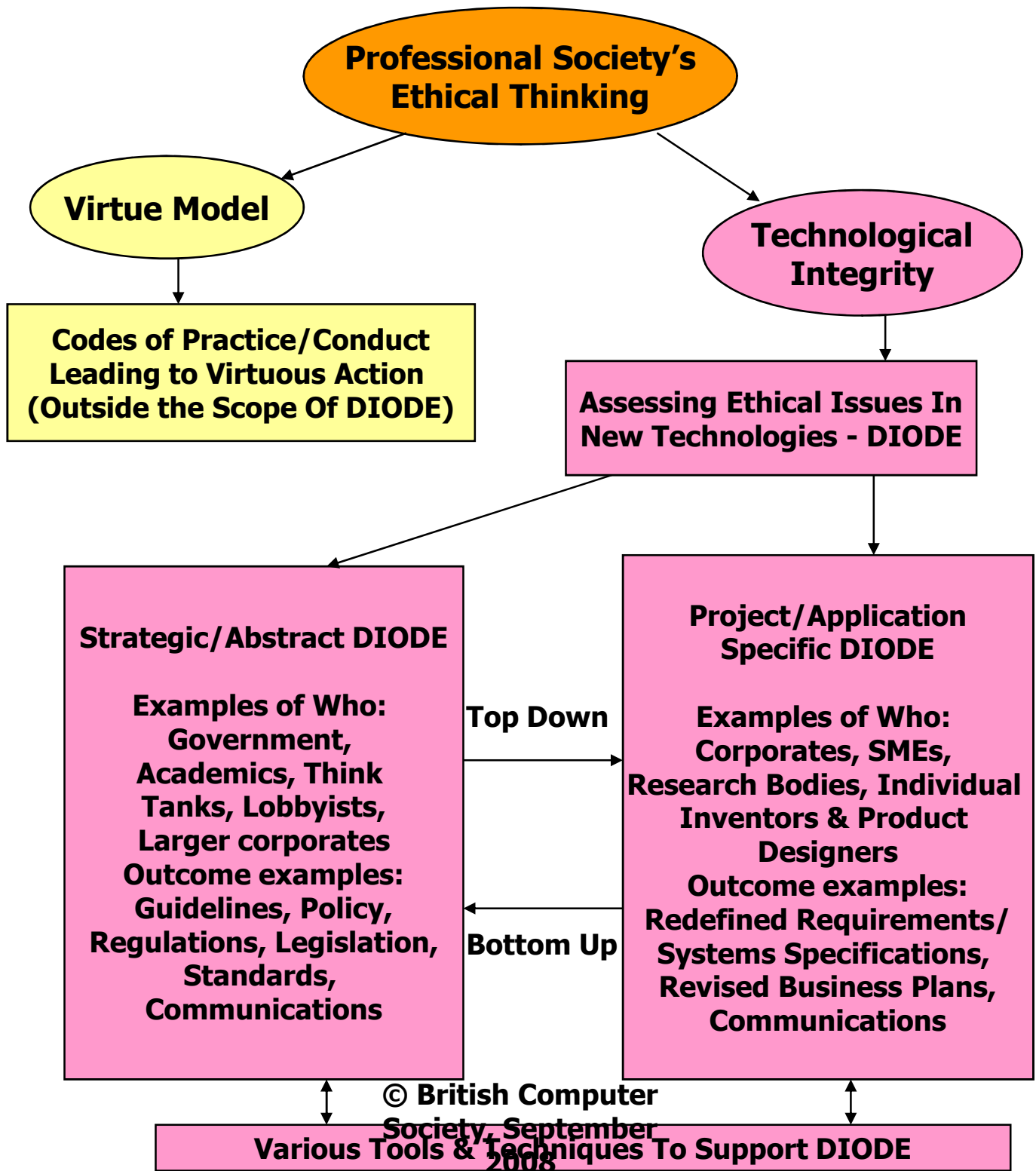


Diagram Two

Assessing Ethical Issues In New Technologies Framework Flowchart

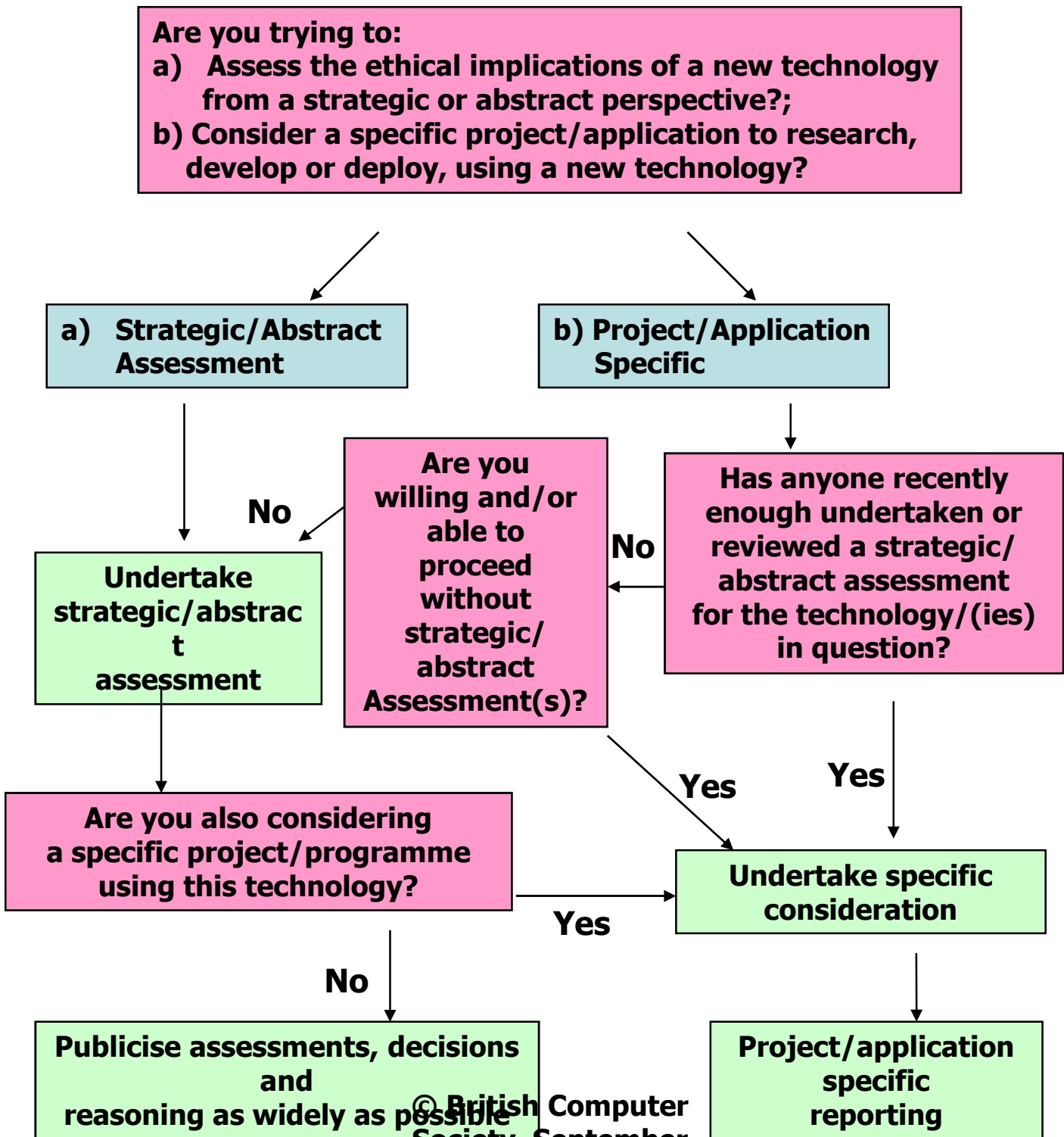
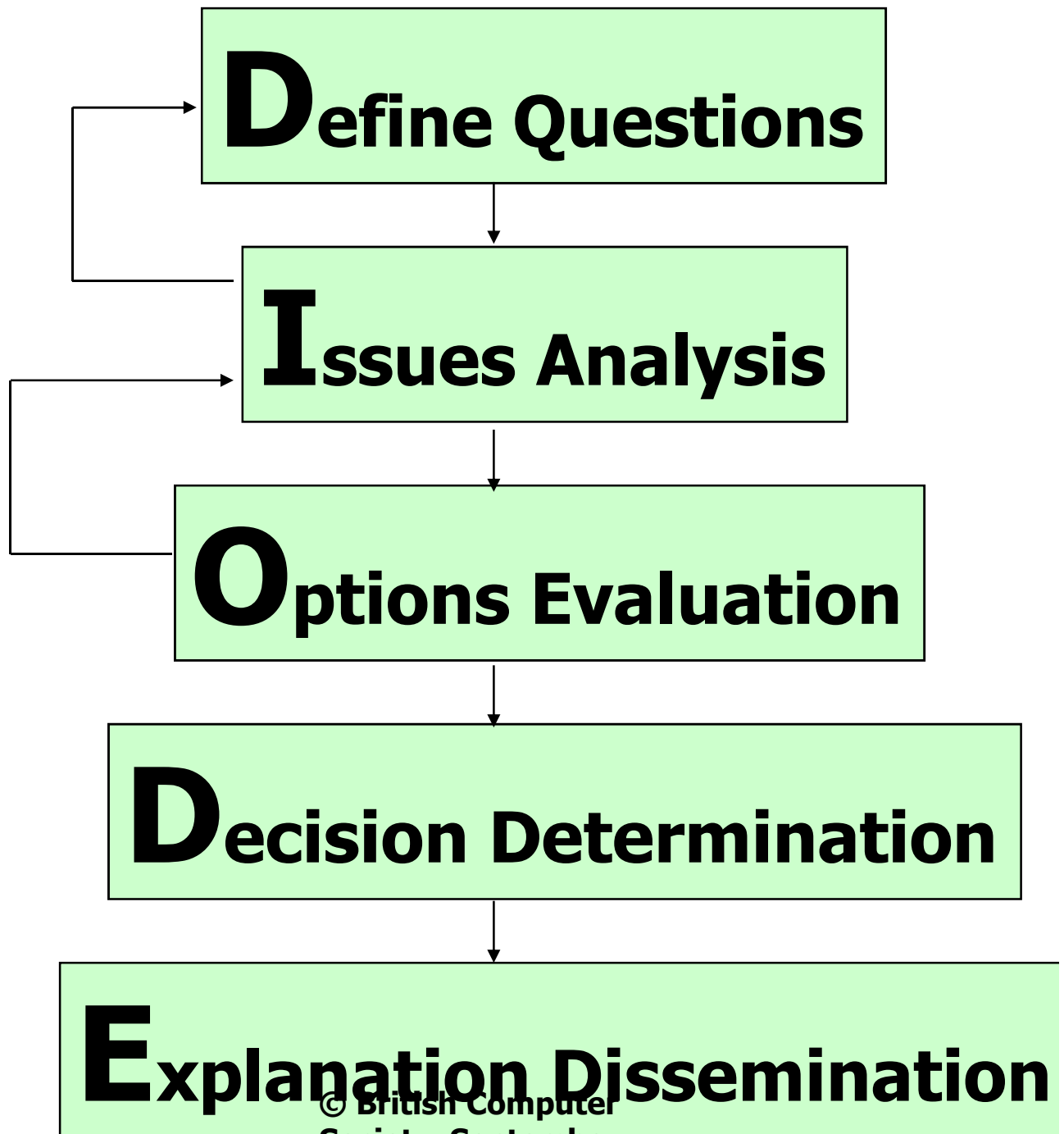


Diagram Three
DIODE –
Five Stage Ethical Assessment
Methodology





Define questions

■ Project specific: example

PS1 Have you clearly described the project/application in question?

PS2 Have you identified which new technology/(ies) are within the scope of your project/application?

PS3 Has anyone recently enough undertaken or reviewed strategic/abstract assessment(s) for the technology/(ies) in question?

PS4 Are you willing and/or able to proceed without strategic/abstract assessments?

PS5 Can you clearly identify all of the agents involved in the project/programme (e.g. you, your business, joint venture partners), including their motives, interests and character?

PS6 Can you clearly state the initial ethical question(s) you wish to answer in respect of this project/programme?



Define questions

- Strategic/abstract assessment:
example

SA1 Have you identified a clear name for this new technology which would enable a reasonably informed layperson to recognise with relative ease the technology in question?

SA2 Can you clearly describe the new technology in question?

SA3 Can you readily identify whether related new technology ideas are within the scope or outside the scope of your definition?

SA4 Can you clearly state the initial ethical question(s) you wish to answer in respect of this new technology?



Issues analysis

■ Example

Have you ensured that risks and rewards are sufficiently examined from each of the following perspectives:

- Rights, fairness, justice and common good of society and the environment as a whole;
- Individuals directly and/or indirectly, potentially affected;
- The IT industry/profession's interests;
- You/your organisation's interests.



Testing the framework

- Project specific

“Completing the above tables forced me to think about the need to extend the guidance to help the professional think outside of the domain of his immediate solution. Although venturing down this path is likely to turn into a complete degree course on Ethics I feel some form of checklists need to be provided. ”



BCS Ethics Forum ...

The Ethics Forum aims to:

- Promote awareness of the ethical dimension of IT
- Act as a source of professionally-recognised expertise
- Stimulate active participation from practitioners within the BCS

www.bcs.org/forums/ethics